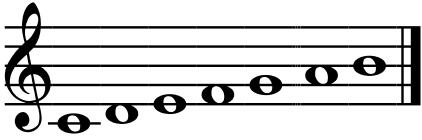


A Symphony of Words

WHOLE NOTES:



C D E F G A B

HALF NOTES:



c d e f g a b

You can rearrange these seven little notes into infinite songs, only a handful of words.

In the song at the bottom of the page, each measure (section between vertical lines) spells out an English word using the musical notes above. First, decode the words, then enter them into the blanks below so they match the given clues. Enter the letters indicated by half notes as lowercase and the letters indicated by whole notes as uppercase.

Finally, Look at the uppercase letters (indicated by whole notes) to reveal a subject that you'll probably never hear a symphony about.

EXAMPLE:



A little water clears Lady Macbeth of it deeD

King's superior _____

Place for a songbird _____

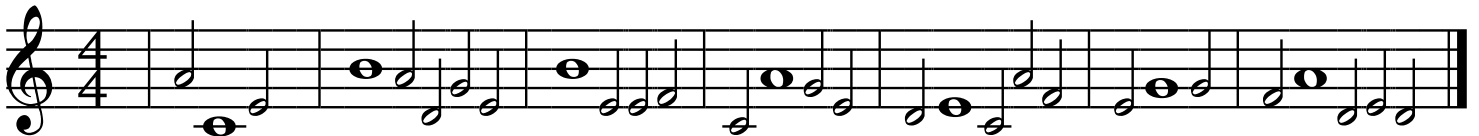
Star of the Old West _____

Word in a famous TV ad question _____

Like some jeans _____

Rooster, once _____

Not regular _____



A subject that you'll probably never hear a symphony about _____

Click the button below when you think you have the answer.